

---

# VIRTU Universal MVP Installation Guide



---

# 1. Introduction

VIRTU Universal MVP includes the base features of Virtu Universal technology, which virtualizes integrated GPU and discrete GPU for best of breed functionality. It also features Virtual Vsync™ for no-compromise visual quality. With the added benefits of HyperFormance technology, VIRTU Universal MVP improves game performance by intelligently reducing redundant rendering tasks in the flow between the CPU, GPU and the display.

## 2. Hardware and Software Specifications

In order to run VIRTU Universal MVP, the following hardware and software is required:

Item	Configuration/Features
<b>Motherboard</b>	Any Intel Sandy Bridge/Ivy Bridge based platform with integrated onboard display output
<b>CPU</b>	Intel Sandy Bridge/Ivy Bridge CPU
<b>Chipset</b>	Intel Sandy Bridge H67/H61/Z68 Intel Ivy bridge Z77/Z75
<b>Discrete GPU</b>	Nvidia GF/GTX 4xx/5xx series AMD HD5xxx/HD6xxx series * Dual GPU graphics cards, CrossFireX™ and SLI™ are not supported
<b>RAM</b>	At least 2GB
<b>Disk Space</b>	At least 15Mb for English and 20Mb for International
<b>OS</b>	Windows® 7 32 bit and Windows® 7 64 bit
<b>APIs</b>	DirectX 9, DirectX10/10.1 and DirectX 11
<b>GPU Drivers</b>	Intel - any WHQL driver Nvidia - any WHQL driver AMD - any WHQL driver

---

## 3. Hardware Installation

### 3.1 i-Mode

**i-Mode** provides users with Sandy Bridge/Ivy Bridge motherboards special features and power saving options when no 3D gaming is used.

To use VIRTU Universal MVP in **i-Mode**, the display device must be connected to a Sandy Bridge/Ivy Bridge motherboard's video output.

**Note:** Display can be also connected to IPG VGA output instead of IPG DVI output.

### 3.2 d-Mode

**d-Mode** is for demanding 3D gamers to achieve uncompromised 3D performance from the discrete GPUs installed in their system. In this mode, VIRTU Universal MVP allows users to utilize Intel's special features such as transcoding, while the display device is connected to a discrete GPU.

To use VIRTU Universal MVP in **d-Mode**, the display device must be connected to a discrete GPU installed in the system.

**Note:** We recommend using **d-Mode** for better 3D performance, instead of using Intel Insider feature or the power saving i-Mode.

---

## 4. Software Installation

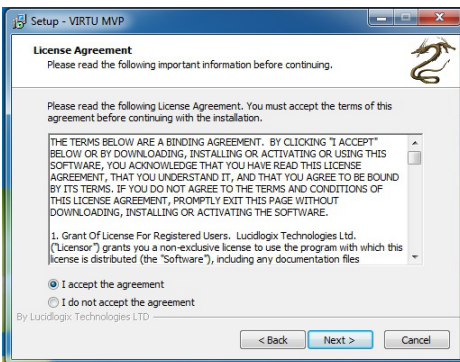
- Note:**
- a. VIRTU Universal MVP is designed for Intel Sandy Bridge/Ivy Bridge based platforms only.
  - b. GPU drivers must be installed prior to VIRTU Universal MVP.
  - c. It is recommended to restart the system after every driver installation.

1. Manually install VIRTU Universal MVP from our support CD.  
VIRTU Universal MVP is located in the following path of our support CD:  
For Win7 32bit:...\Drivers\Virtu\Lucid\Win7\  
For Win7 64bit:...\Drivers\Virtu\Lucid\Win7-64\  
Double-click on the file to start the installation.

2. Click **Next** when the VIRTU Setup Wizard window appears.

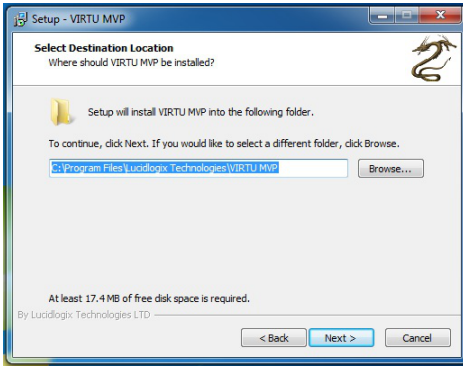


3. Read the license agreement, then select **I accept the agreement** and click **next**.

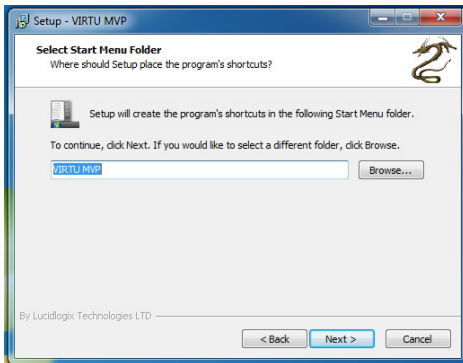


---

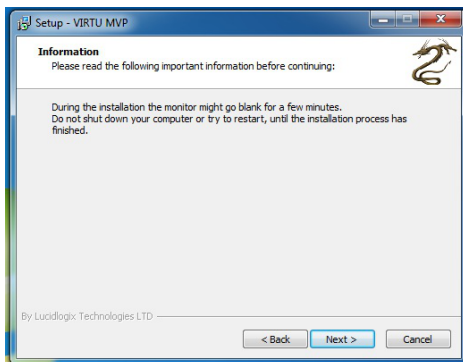
4. Select folder to install VIRTU MVP and click **Next**.



5. Select folder to create shortcut and click **next**.

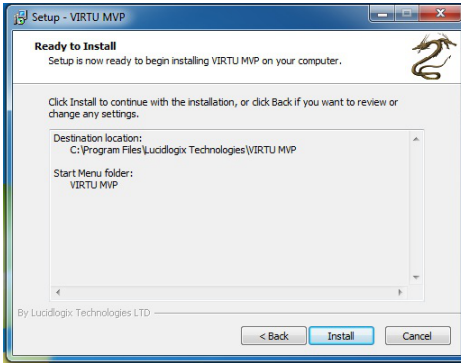


6. Read the information and click **next**.



---

7. Click **Install** to begin installation.



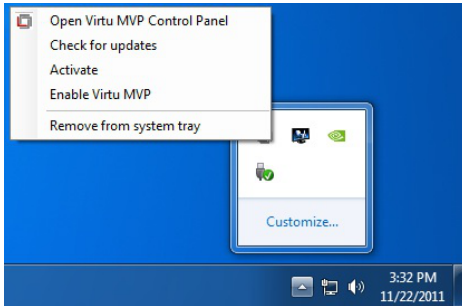
8. Select **Yes, restart the computer now** and click **Finish**.



---

## 5. VIRTU MVP Operation

After the installation process is complete, VIRTU MVP will be activated. Once activated, the Lucid logo appears on your system tray (the right bottom corner of the screen). Right click on the icon and the following screen will pop out.



Click the “Open Virtu MVP Control Panel” option to open the VIRTU MVP control panel.

Click the “Enable/Disable” option to enable or disable VIRTU MVP. When VIRTU MVP is disabled, the system will use the Sandy Bridge/Ivy Bridge IPG for graphics activities.

If there is no logo or a grey logo, it means VIRTU MVP is not enabled.

In case no logo is shown on the system tray, you can activate the driver and the control panel manually by using the following instructions:

1. Click “Start”, “Programs” and “VIRTU”.
2. Click the “VIRTU Control Panel” option.

If the logo icon is grey, right click on the icon and click on the “Enable” option to enable VIRTU MVP.

---

## 6. VIRTU MVP Control Panel

### 6.1 Main

When activating the VIRTU MVP control panel (either from the start menu or from the system tray icon), the following window is displayed:



By pressing the big “On” button, VIRTU MVP is activated. If “Show in System Tray” is selected, a small control panel icon will be displayed on the system tray together with the other applications which are currently running.

“In-Game icon” is used to enable/disable the in game VIRTU MVP logo. The following options are available:

1. **Show** – The logo will be displayed in the selected corner of the screen.
2. **Show for a few seconds** - The logo will be shown for a few seconds and then disappear
3. **Hide** – The logo will not be shown.

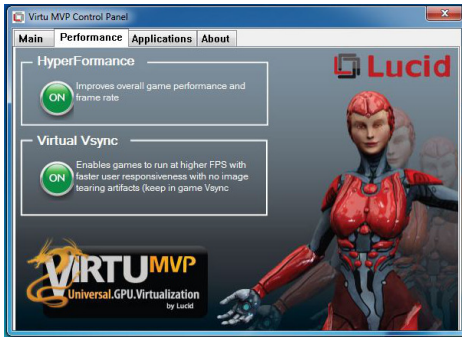
The screen on right allows users to select a corner of the screen which the VIRTU MVP logo will be displayed.

By clicking on “Restore To Defaults”, all settings will be restored to default.



---

## 6.2 Performance



By pressing the big “On” button under “HyperFormance”, improves overall game performance and frame rate.

By pressing the big “On” button under “Virtual Vsync”, enables games to run at higher FPS with faster user responsiveness with no image tearing artifacts.

---

## 6.3 Applications



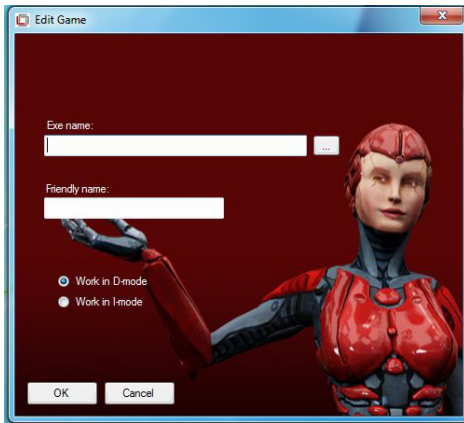
This screen shows the applications that VIRTU MVP supports with the available graphics cards. The application list changes according to the graphics cards available in the system and the current configuration. The list includes the applications that meet functionality and performance tests done by Lucid’s quality assurance.

VIRTU MVP allows users to add new applications using the “Add”, “Edit” and “Remove” buttons. Lucid cannot guarantee the functionality and performance of applications that were not part of the Lucid qualified application list provided with the product.

Note: Adding and editing of the applications list is disabled in evaluation versions of the product.

---

When clicking on the “Add” button, the following window is displayed:



Place the desired application's full “exe” file path in the “Exe name” box. Clicking on the “...” button next to the “exe name” box allows users to browse the location of the desired application's “exe” file.

The “Friendly name” box allows users to give the desired application a name that best describes the application. This is a free text box.

Select “Work in D-mode” or “Work in I-mode” according to your needs.

Press “OK” after filling the required information. This will automatically add and application to the supported game list. Once the desired application is activated, VIRTU MVP will be applied to this application.

Note - adding an application that was not originally part of the game list means that the application did not pass Lucid's QA's tests. Lucid cannot guarantee the functionality and performance of applications that were not part of the Lucid qualified application list provided with the driver.

---

## 6.4 About



By clicking on the “Activate” button, users can activate VIRTU MVP.

This screen provides the version of the VIRTU MVP installed.